

Specifications

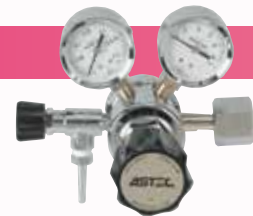
Model	Standard EC6
Exterior Dimensions (mm)	W518×D608×H171
Chambers	6
Inner Dimensions	W108×D180×H19/Chamber
Capacity	310ml with warming plate
Warming plate	6 plates Standard
Gas Flow sensor	Installed in each chamber
Temperature Control	Digital PID Control
Temperature Range ^{※1}	Ambient +5°C~40°C
Temperature Accuracy ^{※1}	±0.1°C
CO ₂ Sensor	Infra Red Sensor
CO ₂ Control	Duty Control
CO ₂ Range	0~20.0%
CO ₂ Accuracy	±0.3%
O ₂ Sensor	Zirconia O ₂ Sensor
O ₂ Control	Duty Control
O ₂ Range	0.1~25.0%
O ₂ Accuracy	±0.5%
Gas Requirement	100% CO ₂ and N ₂
Alarms	Temperature upper limit, Gas deviations (CO ₂ /O ₂), Gas flow, Gas pump Touch panel for Data logging software (PC and Monitor Cable included),
Options	Analog Output unit ECOP : Temperature × 7ch, CO ₂ /O ₂ × 1ch each, Gas flow 6ch, Alarm × 1ch
Weight	26kg
Power	AC100V/110V/220V

※1: Warming plate surface



Gas Analyzer : AGA2008

Detectable Range : CO₂ 0~18.0% / O₂ 0~22.0%
Exterior (mm) : W150 x D280 x H187 Weight : 4.5kg
Power 100~240V



Gas Pressure Regulator : IM-055

Scale with 0.01 Mpa increment, made for Incubator use.
First Stage : 0~25 Mpa / Second Stage 0~0.3 Mpa



Gas Guard System : GS-701

Automatically switches one gas cylinder from another
when the first one gets empty.
Exterior (mm) : W210 x D390 x H 94 Weight : 4.5kg
Power 100~240V



URL <http://www.astec-bio.com> E-mail info@astec-bio.com

Head Office:
4-6-15, Minamizato, Shime, Kasuya, Fukuoka,
811-2207 Tel: +81-92-935-5585 Fax +81-92-936-6613
Korea Office:
4F,403-191 Gaebong3 Dong,Guro gu ,Seoul Korea
TEL : +82-2-2611-4281 FAX : +82-2-2611-4285



Humidity free Incubator

EZ Culture



EZ Culture

Contamination Free

Culturing with no humidity provides no risk for contamination in the embryo-culturing environment.

Individual Control

6 separate chambers provide an optimal environment for embryo development. Fast recovery for the gas concentrations and the temperature is guaranteed.

Advanced alarm system

Dependable alarm systems for temperature, gas concentrations and gas flow. All the alarm events can be obtained through analog output.

Standard Type EC6



Standard type : EC6

Basic system of EZ Culture, coming with 6 chambers which allows a user to set and control the temperature for each chamber, and gas concentrations for the 6 chambers.

Data Logging Software : EZC-Logger

EZC-Logger, user-friendly data logging software runs on Windows®, comes standard for EC6. Temperature, Gas concentrations and gas flow rate can be digitally monitored and logged. All the alarm events can be stored with dates of the events, the number of incubation chamber and message that are preinstalled in the software. All the stored data can be exported as CSV file format for later modification in different format.



The incubation chamber is visibly accessible without exposing sample to the ambient air.

Slide bar to open the chamber.



Warming plates are customized to accommodate the following 3 patterns of dishes.

- ①BP-A
Falcon® 35mm × 6, 60mm × 3
Nunc® 4 well × 2
- ②BP-B
Falcon® 35mm × 6
Center well dish (60mm) × 3
Nunc® 4 well × 2
- ③BP-C
Nunc® 35mm × 6, 60mm × 3
Nunc® 4 well × 2

Temperature setting



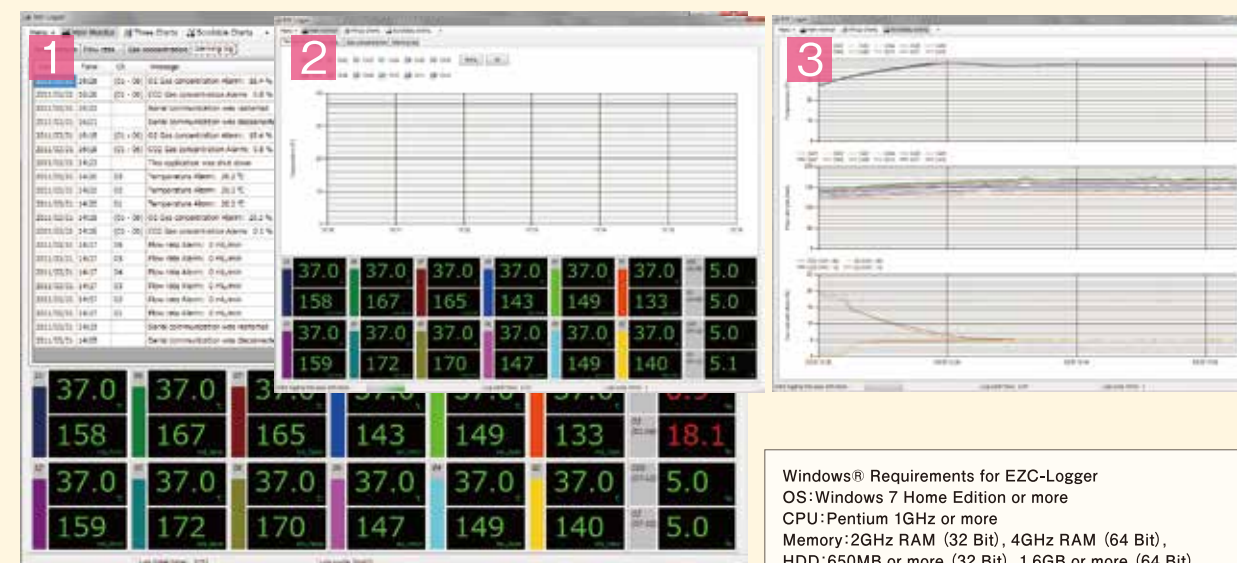
Gas concentration setting



Gas flow monitor



The controller on EC6 regulates the temperature and gas concentrations for each chamber. The gas flow rates can be monitored on the same display as well.



1 Alarm Events 2 Real time trends 3 Historical trends

Windows® Requirements for EZC-Logger
 OS: Windows 7 Home Edition or more
 CPU: Pentium 1GHz or more
 Memory: 2GHz RAM (32 Bit), 4GHz RAM (64 Bit),
 HDD: 650MB or more (32 Bit), 1.6GB or more (64 Bit)
 Interface: USB1.1/2.0
 Display: 1280 x 1024 pixels or more